

How to donate?

All donations are welcome to support this important campaign!

If you want to donate, please go to the action page of the AVL Foundation.

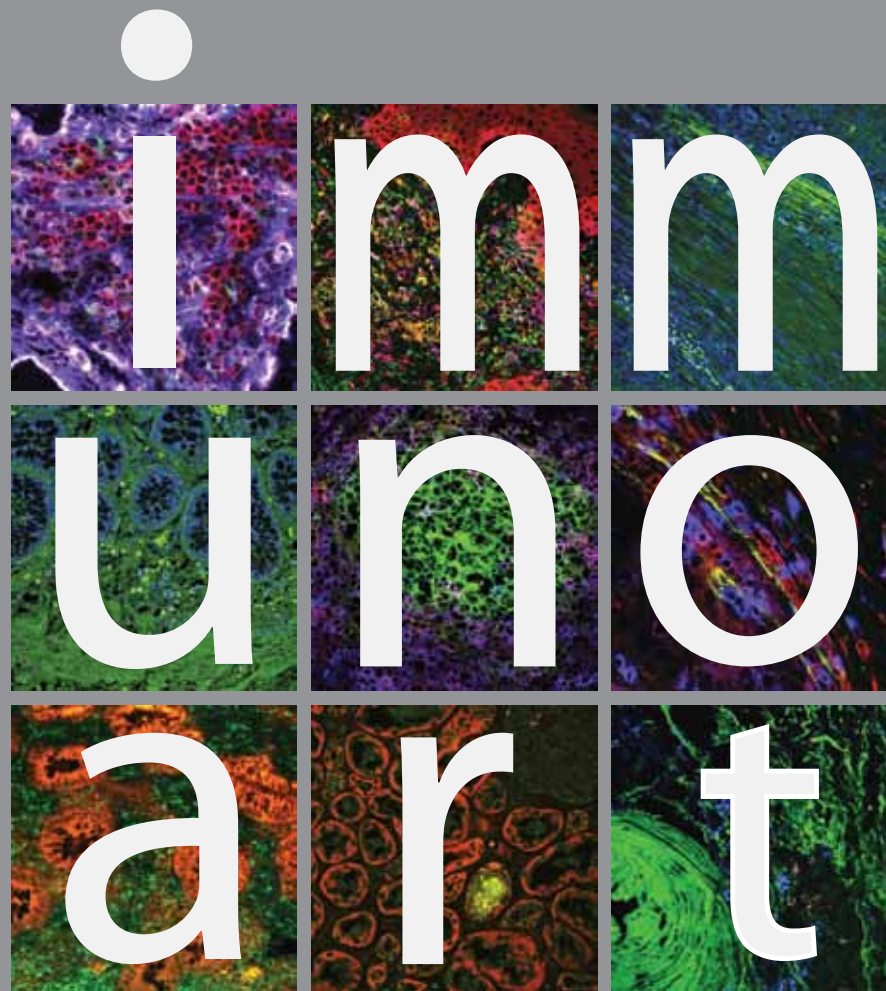
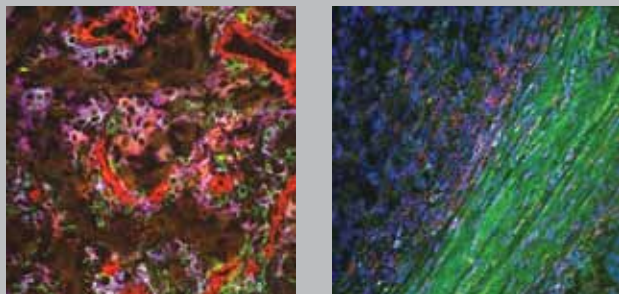
You can find this via our website www.immuno-art.nl This fund offers fiscal advantages for tax payers in the Netherlands.

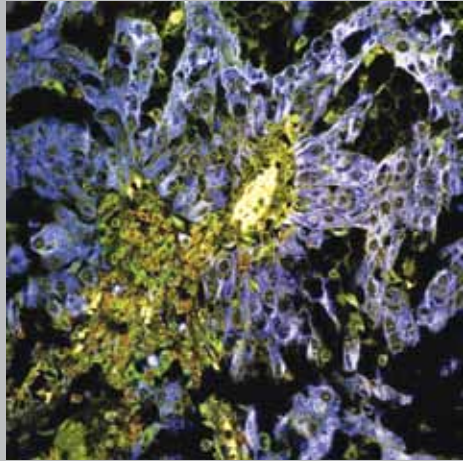
Want to donate a larger gift? Please let us know and send an email to

info@immuno-art.nl

More information?

For further questions about donations, exhibitions or acquiring **immuno-art**, please visit our website www.immuno-art.nl or mail us at info@immuno-art.nl





What is immuno-art?

immuno-art is a campaign to support research at the Netherlands Cancer Institute to develop immunotherapies against cancer.

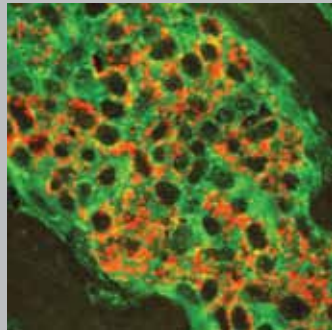
immuno-art is a concept developed by Florry Vyth-Dreese. She worked as immunologist and scientist at the NKI-AVL (Dutch Cancer Institute - Antoni van Leeuwenhoek) for 35 years.

immuno-art images are based on the microscopic pictures from her research. These images have an esthetical and artistic value.

The fluorescent colors of the original pictures form the basis for colorfull **immuno-art** objects.

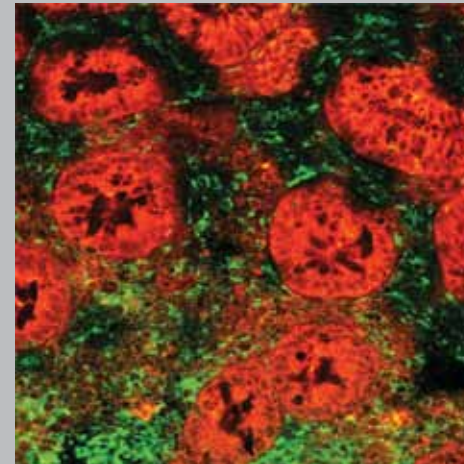
What is the objective of the immuno-art campaign?

With the **immuno-art campaign**, funds are raised to support development of cancer immunotherapies.



Treatment aims to strengthen the immune system of patients. A strong immune system can help fight the patient's own tumor.

A large amount of money is needed to develop these immunotherapies. The revenues generated by the **immuno-art** campaign contribute to the development of these new, promising treatments.



Interested in purchasing immuno-art works?

To view and acquire **immuno-art** objects, visit the next exhibition or donation event.

For more information and examples of **immuno-art**, go to www.immuno-art.nl or send an email to info@immuno-art.nl